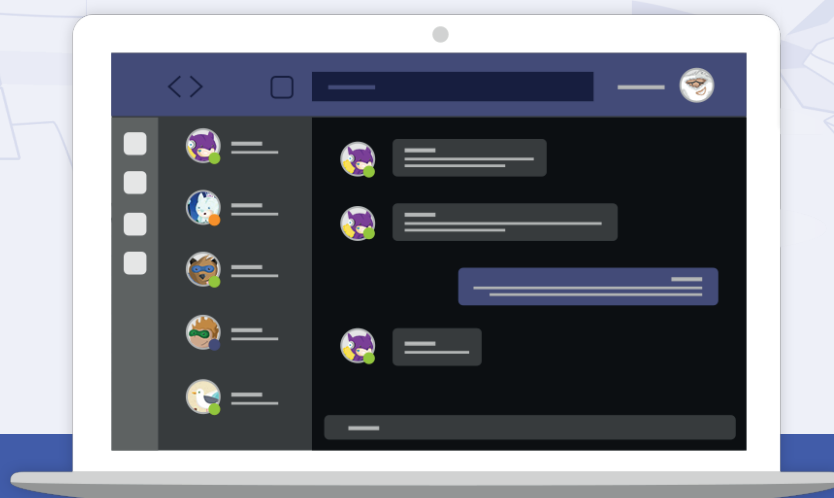




# Senso Safeguarding for Microsoft Teams App

Monitor Microsoft Teams' chats and images sent to identify at risk, vulnerable, inappropriate or off-task user behaviour using keyword monitoring and A.I based visual threat detection engine.



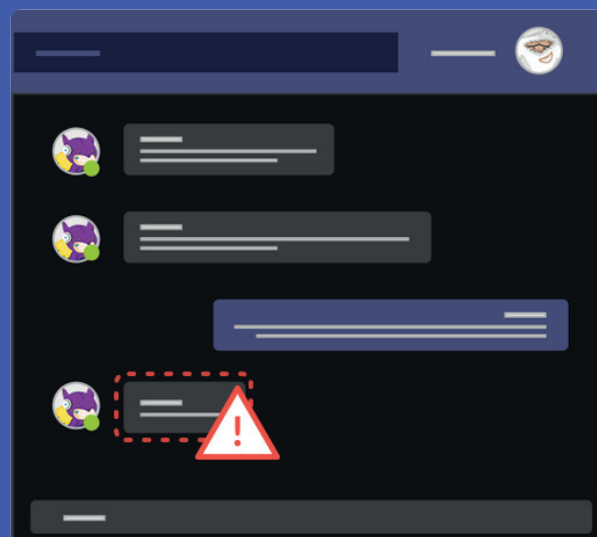
## Monitor Microsoft Teams Chat

### SEAMLESS INTEGRATION

Senso's safeguarding cloud software unobtrusively integrates with Microsoft Teams chat, giving safeguarders access to alerts through the Teams app or within the safeguarding logs within the Senso platform.

### KEYWORDS AND IMAGES

Senso will monitor chat messages and inspect images for visual threats using Senso's Artificial Intelligence (AI) and keyword algorithms that are focused on user safety, then raise an alert with the option to email an alert when a violation is detected.



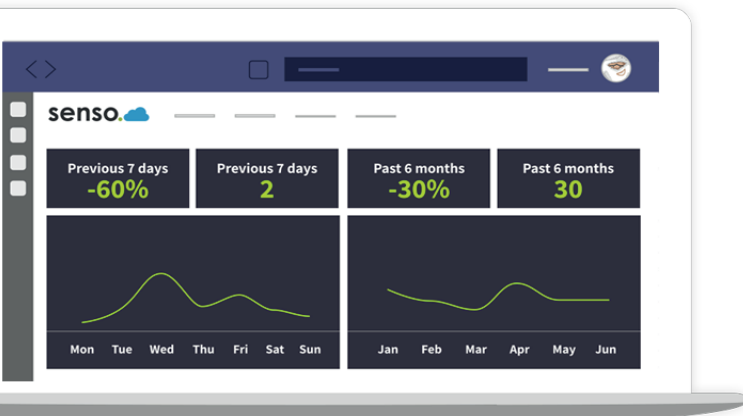
## Safeguarding Data

### DASHBOARD

Gain a clear insight of violations made within Microsoft Teams chat. Graphs and statistics help to breakdown the number of violations and alerts made over time.

### DATA AND TRENDS

Graphs and statistics help in visualising violations made, allowing you to react to trends and pinpoint issues before they become a reoccurring problem.



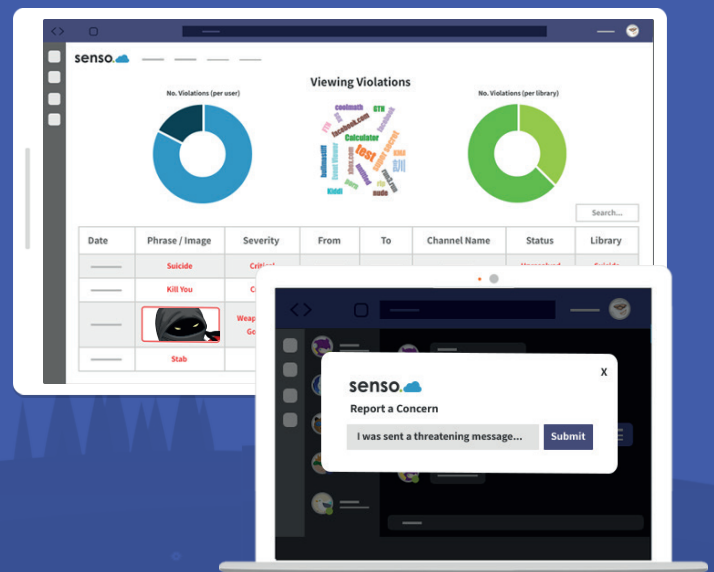
## Violations and Reporting

### VIEWING VIOLATIONS

Senso alerts you to users who have sent inappropriate messages or images within Microsoft Teams and logs the date, severity and channel name, so you can manage the situation.

### REPORT A CONCERN

Senso helps in safeguarding staff and students with the 'report a concern' feature, allowing users to report anything that has caused them concern directly from Teams.



## Agentless Safeguarding Software

### COMPLETELY AGENTLESS

Senso's safeguarding software is agentless, meaning there is no software to install. It works at school, home or on the go regardless of the device. I.e. mobile phone and personal devices. Our cloud based software runs seamlessly within your Teams tenancy with automatic updates making distance learning safer and more resilient for the future.

# Protect Students and Staff

---

## SENSO SAFEGUARDING

The Senso Safeguarding for Microsoft Teams App is designed to protect students and staff using the school-provided Microsoft Teams resource by proactively monitoring and indicating to relevant staff:

- ✓ Users who may be vulnerable or at risk
- ✓ Users who may pose a risk to others
- ✓ Inappropriate or harmful behaviour

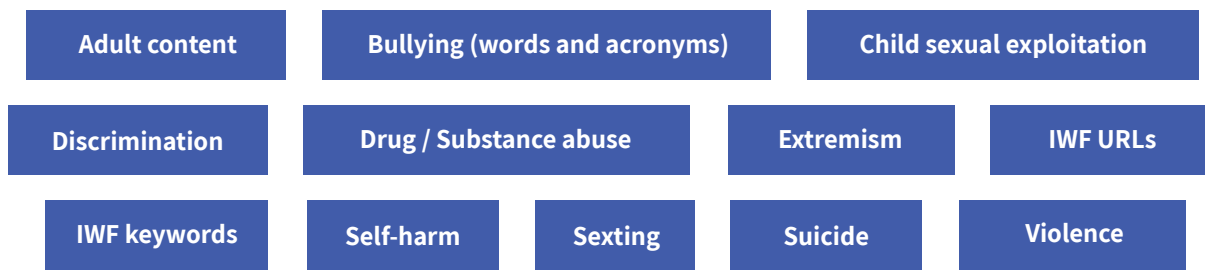
## HOW THE APP WORKS

The app works by monitoring both channel and private based chats for inappropriate messages or indications of vulnerability, as well as scanning every image sent within a chat for harmful or inappropriate content.

Our inbuilt keyword libraries are developed alongside some of the world's leading safeguarding organisations and are updated twice monthly (URL lists updated daily by the CTIRU).

## Keyword Libraries

---



## Every image sent is scanned by our A.I based visual threat detection engine.

This will alert to any imagery falling into the below categories:

